



Steps to Finding Childcare for Families

1

Where to look for Childcare

There are many ways to look for childcare. Here are the most convenient options.

- WeCare (app)**
- Winnie (app)**
- Google Maps**
- Yelp**
- Social Media**



Subsidy Options

Government assistance offers childcare subsidies to ensure affordability. Contact your local social services or child care referral agency to check for eligibility. For support, contact SCPA at **(206) 278-6580** or email **support@scpawa.org**

DSHS - [1 \(800\) 394-4571](tel:18003944571)

City of Seattle - [\(206\) 386-1050](tel:2063861050)

King County (CCFA) - [\(206\) 329-1011](tel:2063291011)

Best Starts for Kids (BSK) - [\(206\) 263-9105](tel:2062639105)

2



3

Contact Childcare



4

Visit Childcare

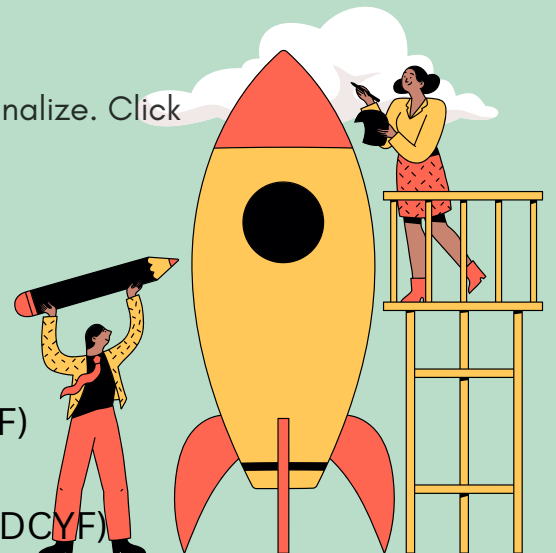


5

Applications

There are a few documents needed to finalize. Click each form to download and fill out.

1. [Childcare Registration \(DCYF\)](#)
2. [Childcare Agreement \(DCYF\)](#)
3. [Immunization Log \(DCYF\)](#)
4. [Food Allergies \(King County\)](#)
5. [Medication Authorization \(DCYF\)](#)
6. [Permission Form \(DCYF\)](#)
7. [Health Consultant Agreement \(DCYF\)](#)



Begin Childcare

6

